

DAILY MARITIME INCIDENT UPDATE

Information Fusion Center-Colombo



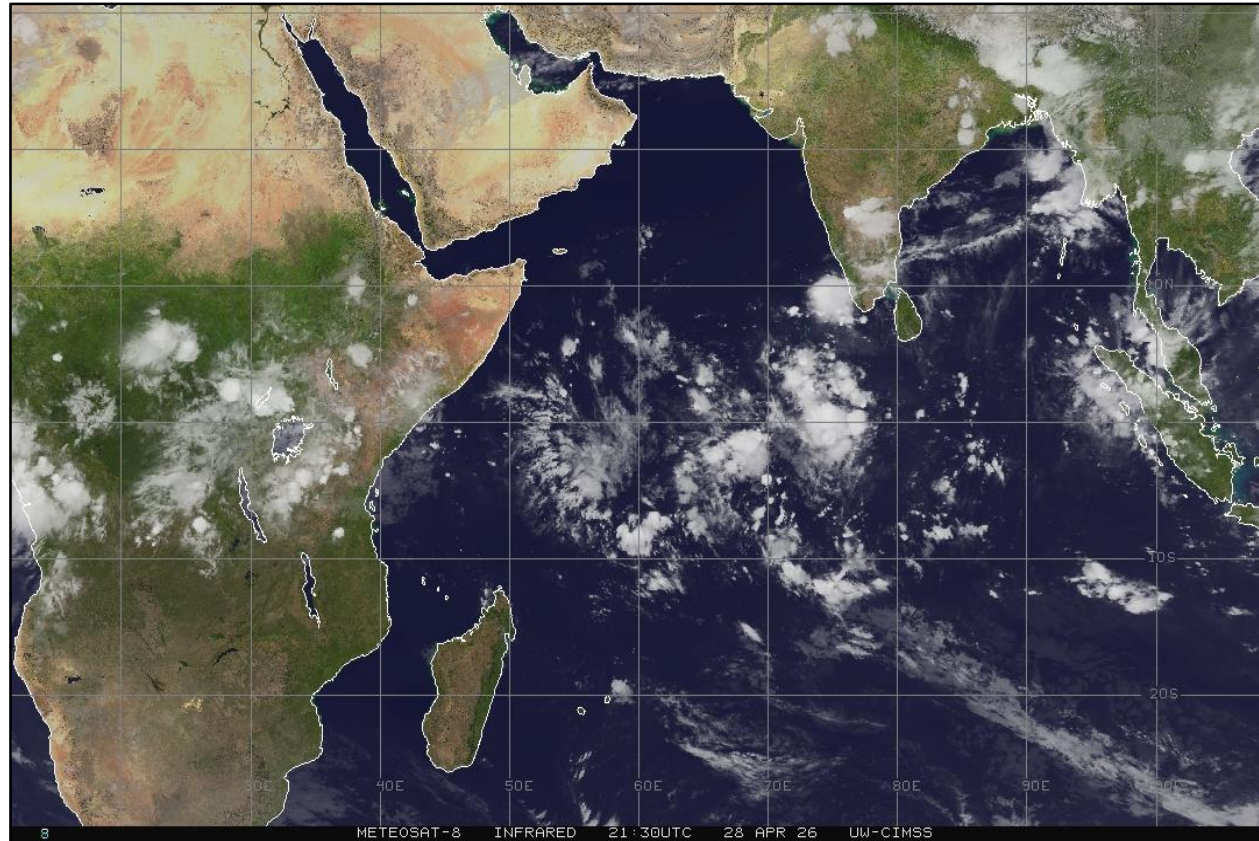
Information Fusion Center
Colombo
Sri Lanka

Date 2026.04.30

WEATHER FORECAST



Weather Forecast for Next 24 hrs



FF-59

FLEET FORECAST

Fleet Forecast for Area - E

Issued by the National Meteorological Center, Department of Meteorology Sri Lanka.

Valid period: 2026.04.30/0600UTC to 2026.04.30/1400UTC

Issued at 0000UTC on 2026.04.30

To: CBO Radio/Fisheries/SL Navy/CBO Port/Coast Guard

ITCZ line is approximately along : EQ 60E, 02N 70E, 04N 80E,

Shear line is approximately along : 06S 60E, 06S 70E, 05S 80E, 01N 90E, 03S 100E

Weather:

OCNL Showers / T'Showers in sections : 20, 25, 40, 45, 60, 65,

SCT Showers / T'Showers in sections : 00, 05, 30, 35, 50, 55, 70, 75, 80, 85

ISOL Showers / T'Showers elsewhere.

Winds:

North of ITCZ:

West of 82E: SW'yly to W'yly / (10-20) kts, gusting up to 25kts in sections 05, 20, 25.

East of 82E: S'yly or Variable / (05-15) kts.

In between ITCZ and Shear line

West of 80E: SW'yly to W'yly / (10-20) kts, gusting up to 25kts in section 45.

East of 80E: SE'yly or Variable / (05-15) kts.

South of Shear line:

SE'yly / (10-20)kts.

Seas:

Moderate, fairly rough at times in Sections : 05, 20, 25, 45

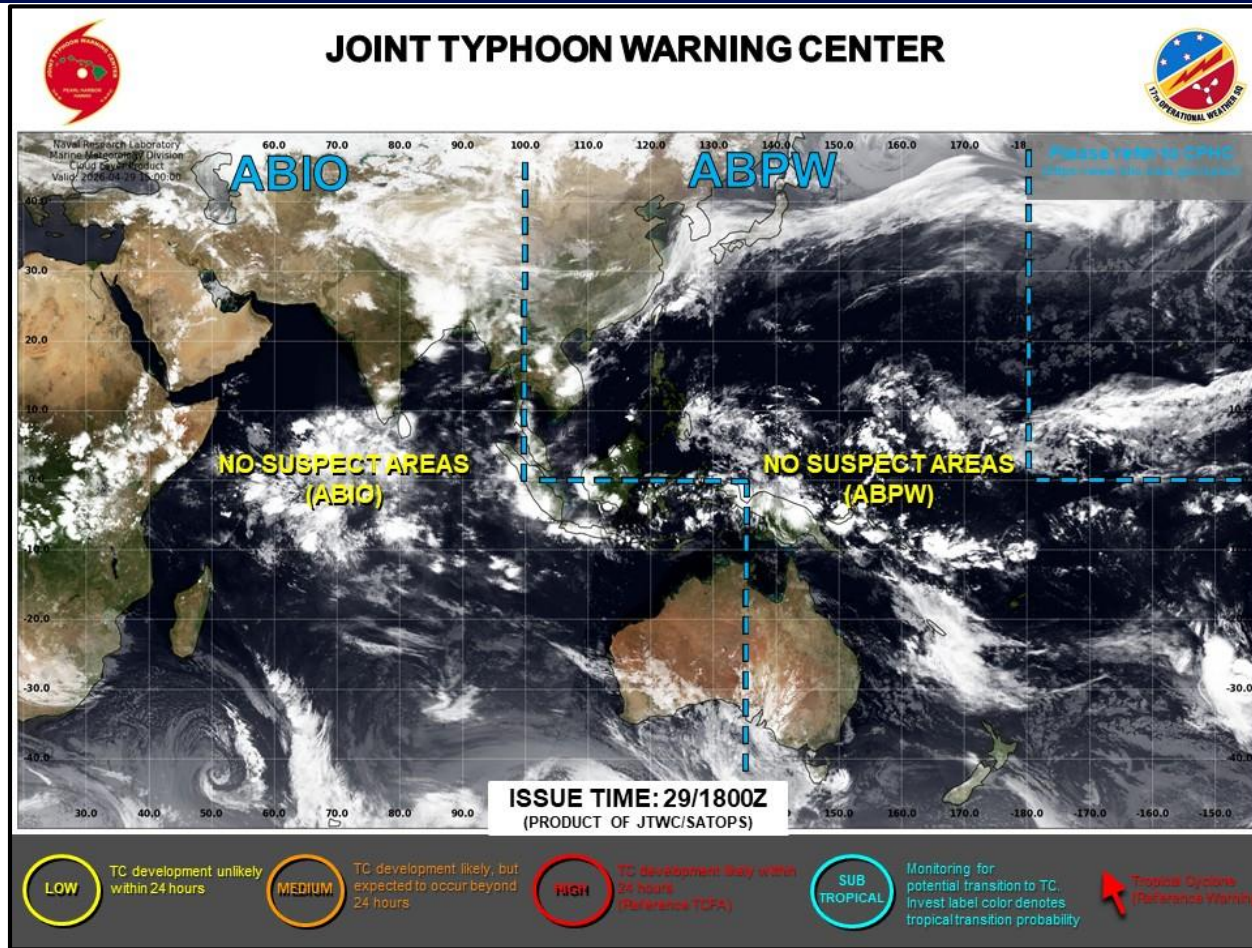
Moderate in Sections : 10, 40, 65, 80, 85

Slight to moderate elsewhere.

NOTE: Seas can be temporarily very rough during thundershowers.

- Source: 1. <https://meteo.gov.lk> 2. <https://www.srilankaview.com/weather.htm>

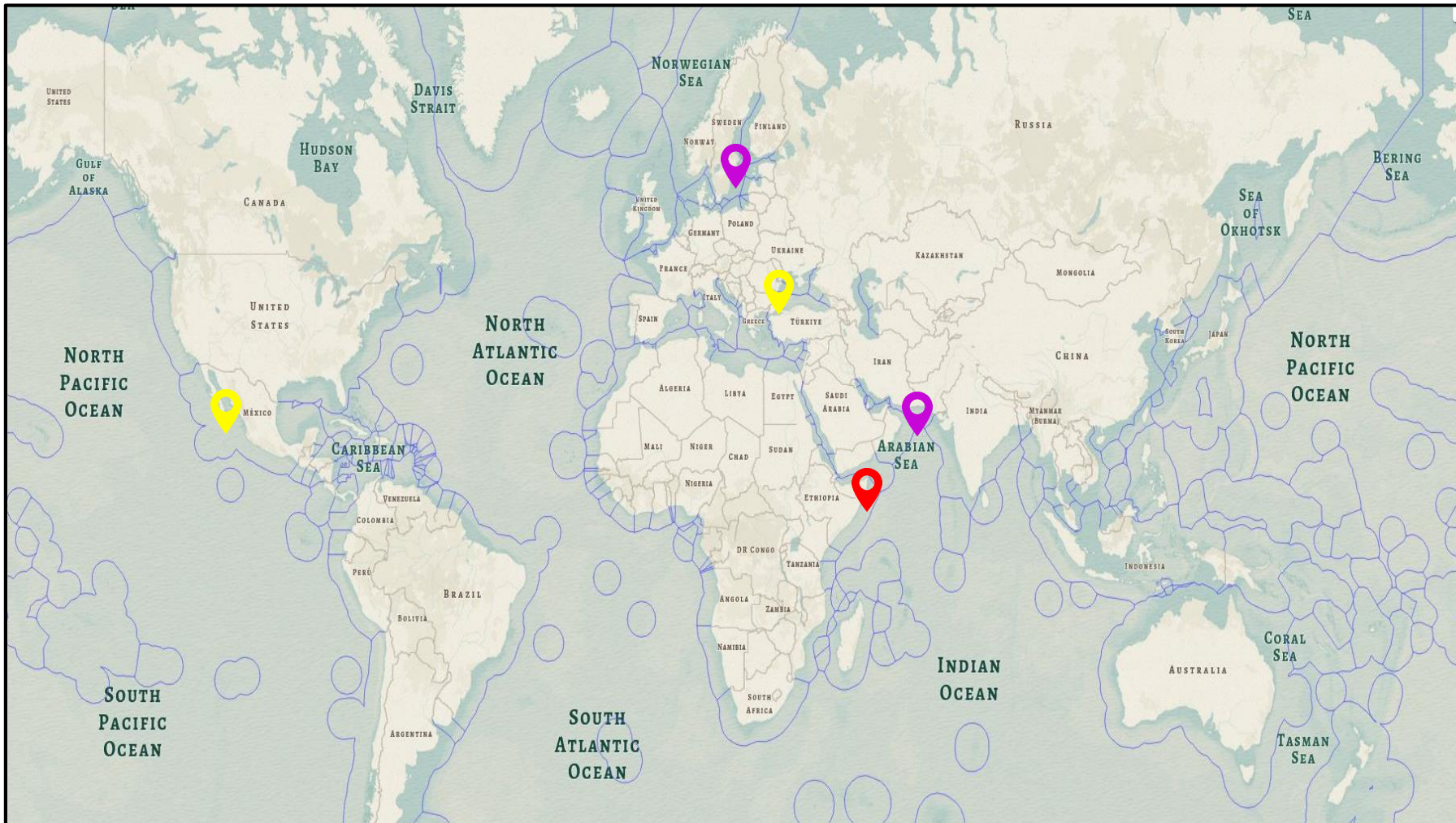
CYCLONE



• Source: <https://www.metoc.dc3n.navy.mil/jtwc/jtwc.html>



SUMMERY (MARITIME INCIDENT)



CATEGORY	NO
Maritime Incidents	02
Piracy & Armed Robbery	01
Smuggling	NIL
IUU Fishing	NIL
Narcotic	NIL
Irregular Human Migration	NIL
Marine Environment Pollution	NIL
Other	02
Total Incidents	05

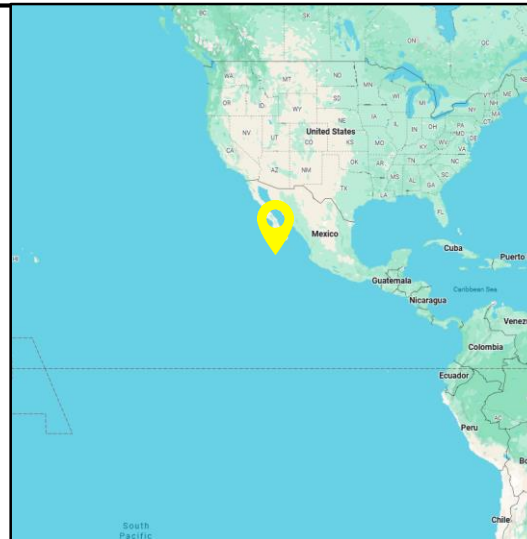
MARITIME INCIDENTS



27 Apr/Cruise Ship Passenger Dies After Falling From Balcony /Mexico

INCIDENT DATE	COUNTRY/REGION	LOCATION	SUB CATEGORIES	VESSEL DETAILS	ADDITIONAL DETAILS
2026.04.27	Mexico	Near Catalina Island	Death on board (DOB)	Cruise Ship	According to the Cruise Line, the woman fell from her cabin balcony onto a lower deck. Her family, who were traveling with her, alerted the ship's crew after the incident.

A passenger on a cruise ship died after falling from her stateroom balcony during a Baja Mexico cruise near Catalina Island. The incident occurred early on April 27 while the vessel, carrying 4,126 passengers, was navigating near Catalina Island, leading to an investigation by federal authorities.



Source - : <https://www.marineinsight.com/cruise-ship-passenger-dies-after-falling-from-balcony-near-catalina-fbi-investigates/>

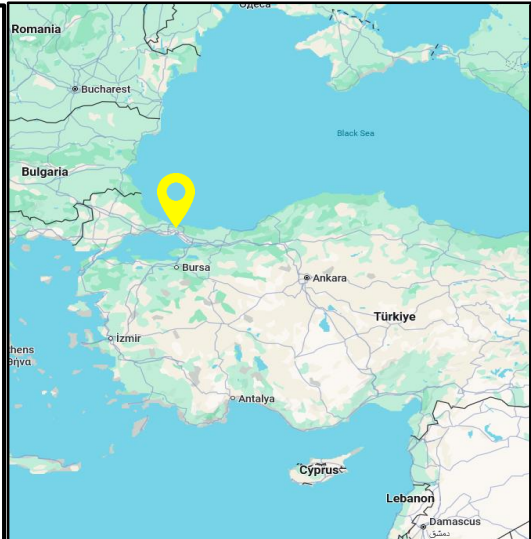
MARITIME INCIDENTS



29 Apr/Container Ship Runs Aground/Turkey

INCIDENT DATE	COUNTRY/REGION	LOCATION	SUB CATEGORIES	VESSEL DETAILS	ADDITIONAL DETAILS
2026.04.29	Turkey	Off Yeniköy in Istanbul	Grounding/Stranding	Name – Kappa Type – Cargo Flag - Turkiye	Initial reports indicated that the vessel experienced a steering or rudder failure while entering the Istanbul Strait, leading it to drift towards the shore and halt just meters away from historic waterfront mansions known as yalis.

A Turkish-flagged container ship, the 148-meter KAPPA, was refloated after running aground near waterfront mansions along the Bosphorus in Istanbul. The incident occurred around midnight while the vessel was en route from Russia to Kocaeli, briefly disrupting traffic in this busy maritime area, and involved a pilot on board according to Turkish authorities.



Source -: <https://www.marineinsight.com/video-container-ship-runs-aground-near-istanbul-mansions-halts-bosphorus-traffic/>

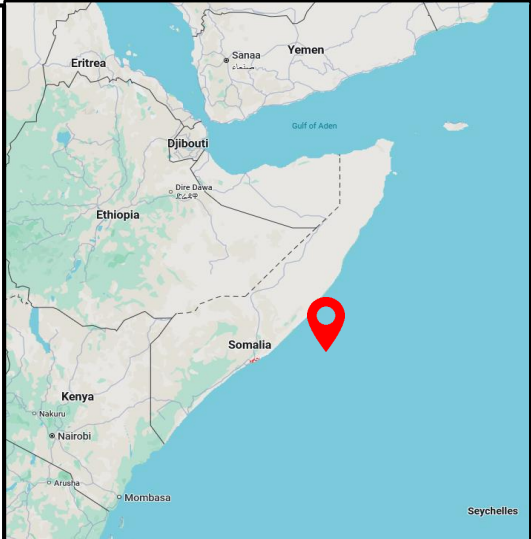
PIRACY & ARMED ROBBERY



28 Apr/UKMTO Reports Latest Piracy Attempt/Somalia

INCIDENT DATE	COUNTRY/REGION	LOCATION	SUB CATEGORIES	VESSEL DETAILS	ADDITIONAL DETAILS
2026.04.28	Somalia	Off Yeniköy in Istanbul	Piracy	Name – Sward Type – Cargo Flag - Saint Kitts And Nevis	This incident indicates a rise in piracy off the Somali coast, with authorities reporting four suspected attacks, including the confirmed hijackings of the Honour 25 and Sward vessels.

The latest incident occurred 500 nautical miles east of Mogadishu involving a tanker in the Indian Ocean. The UKMTO reported that a possible pirate action group approached the vessel, with a larger wooden craft crossing ahead at about one nautical mile. Subsequently, two small boats came close from the starboard side but retreated upon seeing security personnel on board. No injuries or damage were reported.



Source -: <https://www.marinetraffic.com/en/maritime-news/15/maritime-security/2026/12901/ukmto-reports-latest-piracy-attempt-off-somalia-coast>

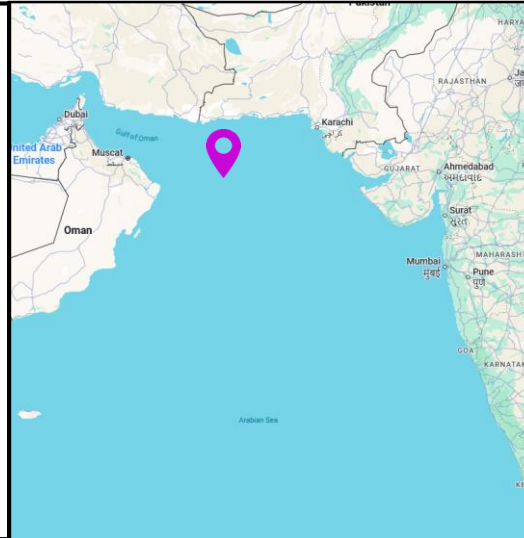
OTHER



29 Apr/U.S Marines Board Container Ship in Arabian Sea/United States

INCIDENT DATE	COUNTRY/REGION	LOCATION	SUB CATEGORIES	VESSEL DETAILS	ADDITIONAL DETAILS
2026.04.29	United States	Arabian Sea	Naval Activities	Name - Blue Star III	U.S. Marines boarded a commercial vessel in the Arabian Sea due to suspicions that it was en route to an Iranian port, potentially violating the U.S. naval blockade of the Strait of Hormuz.

The U.S. personnel thoroughly searched the M/V Blue Star III, a commercial ship suspected of aiming to reach Iran in violation of the U.S. blockade on Iranian ports. After confirming that Iran was not its destination, the ship was allowed to go. This operation was conducted by U.S. Marines from the 31st Marine Expeditionary Unit in the Arabian Sea, as reported by CENTCOM on X.



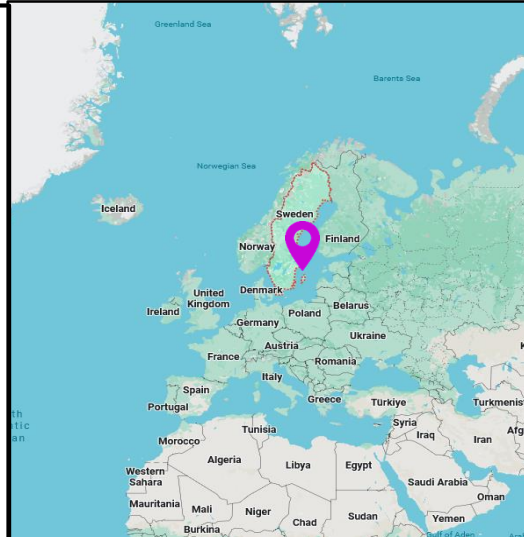
Source -: <https://www.marineinsight.com/u-s-marines-board-container-ship-suspected-of-sailing-to-an-iranian-port/>



28 Apr/Rare 16th Century Shipwreck Discovered/Sweden

INCIDENT DATE	COUNTRY/REGION	LOCATION	SUB CATEGORIES	VESSEL DETAILS	ADDITIONAL DETAILS
2026.04.28	Sweden	Kalmar Strait	Foreign affairs	-	The discovery of the vessel, dating back to the late 1500s, was announced by authorities on April 28 following an analysis.

A 16th century shipwreck was discovered off Sweden's southeastern coast, which officials believe may provide significant historical and archaeological insights. The wreck was located by the Swedish navy vessel HMS Belos during a military exercise in late 2025, in the Kalmar Strait, situated between Sweden's mainland and the island of Öland.



Source -: <https://www.marineinsight.com/rare-16th-century-shipwreck-discovered-off-sweden-older-than-iconic-vasa/>



Information Fusion Center Colombo Sri Lanka

DISCLAIMER

The information in this report has been sourced from various internal and external parties, including international and local stakeholders, maritime agencies, and open sources. The report analyzes incidents to identify trends and discrepancies, aiming to improve the safety and security of mariners and seafarers. While efforts have been made to ensure data accuracy, users should exercise due diligence. Some incident locations may be approximate. IFC-Colombo requests stakeholders' cooperation in reporting incidents for more accurate analysis of maritime threats. The views expressed in this report do not reflect those of the Sri Lanka Navy or Government of Sri Lanka.

The Officer Incharge
Information Fusion Centre
Colombo 01,
Sri Lanka.
+94 11 719 480 6
+94 74 120 4829
ifc@navy.lk
ifc.cbo@gmail.com